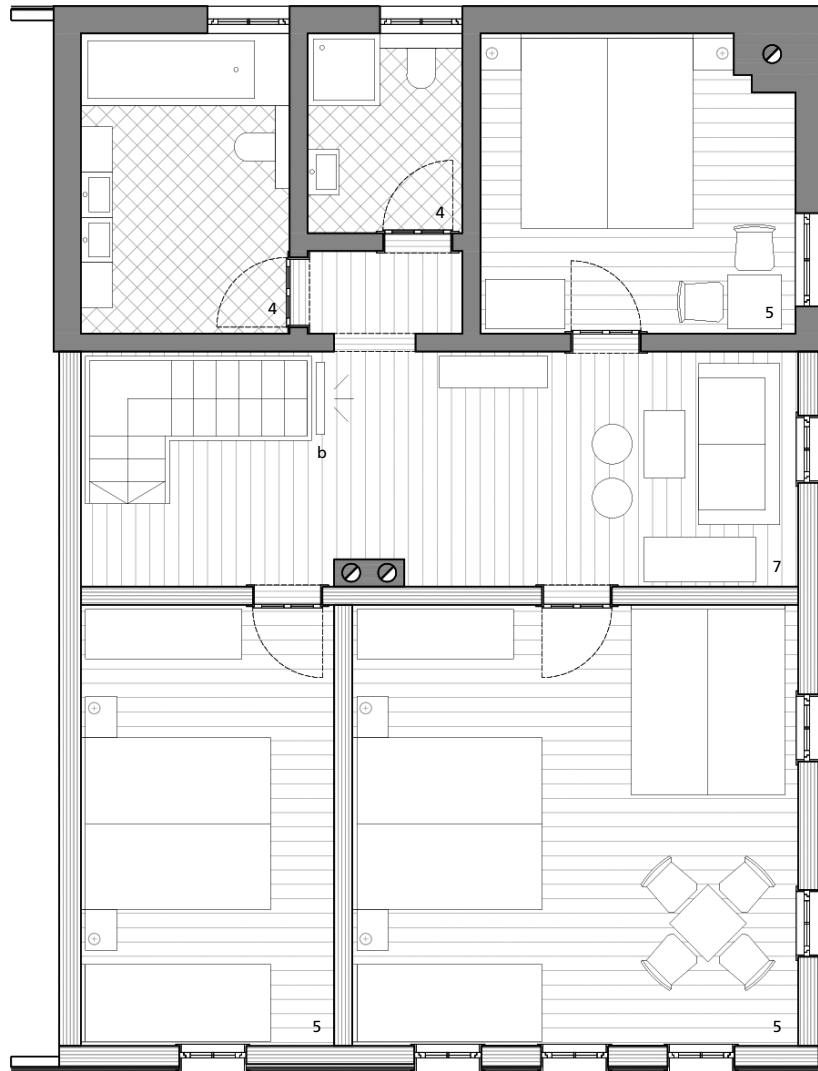
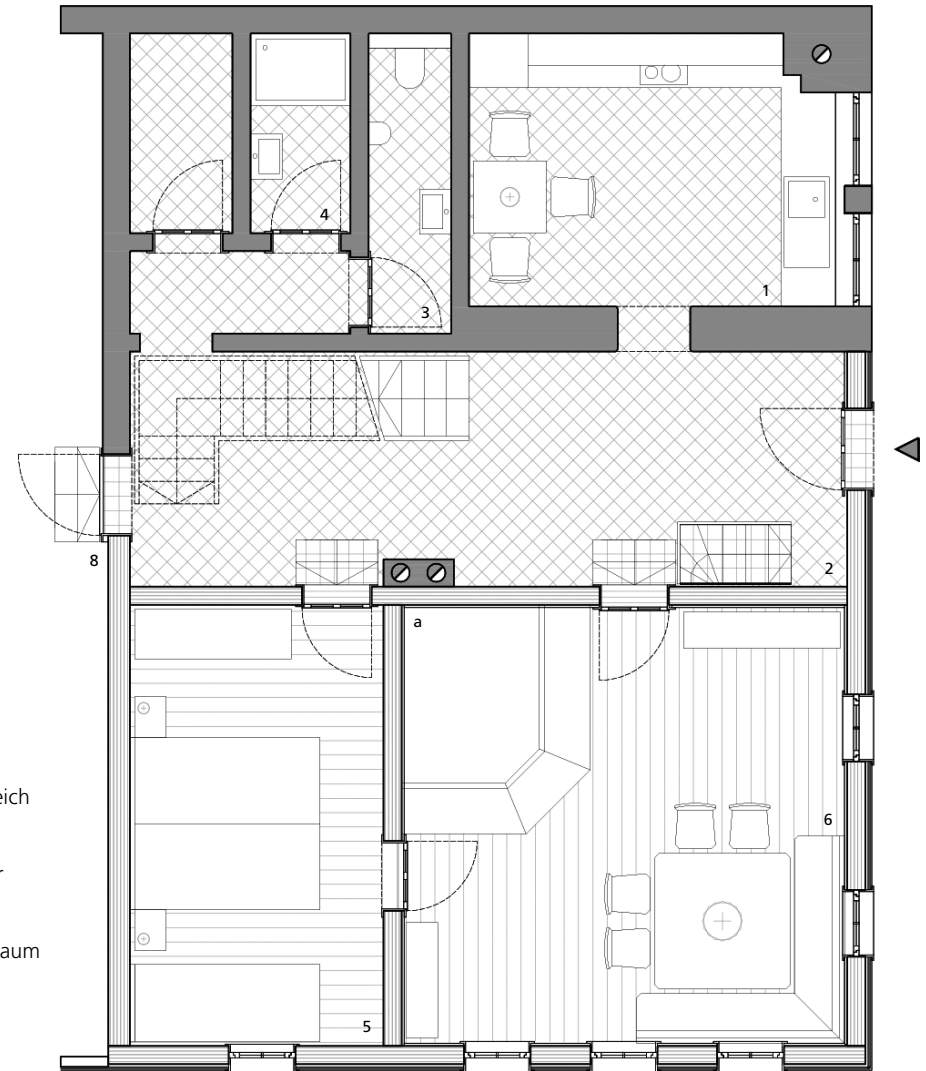


ETAGENPLAN OLGAHÜTTE



Obergeschoß



Erdgeschoß

- 1 Küche
- 2 Eingangsbereich
- 3 WC
- 4 Bad
- 5 Schlafzimmer
- 6 Stube
- 7 Diele
- 8 Garage/Schiraum

- a Kachelofen
- b LCD-TV